



SX-17

An incredibly versatile sharp surveillance display with durable, high performance features designed expressly for today's security environments.

The SX-17 is a security-specific display featuring quick signal-switching time, Anti-Burn-in™ technology and NeoV™ Optical Glass which protects against scratches and other incidental damage during the lifetime of the display. The VESA compatible mounts, thin profile, durable metal casing and built in BNC connectors allow multiple SX-17 displays to be easily installed in any surveillance configuration for security environments.

- > NeoV™ Optical Glass
- > Distinctive bezel design and durable metal casing
- > Anti-Burn-in™ technology to prevent image sticking
- > Mask Mode to reduce image distortion
- > Quick signal-switching time (≤ 0.8 sec.)
- > Real-time image display with no time lag
- > Automatic recovery of video settings after power interruptions
- > Video looping output supports auto termination
- > Supports NTSC/PAL/SECAM video systems
- > Auto-adjustment when VGA input is selected
- > Kensington® security socket
- > VESA standard wall mount



NeoV™ Optical Glass - The most trusted hard glass protection available. Only on AG Neovo displays

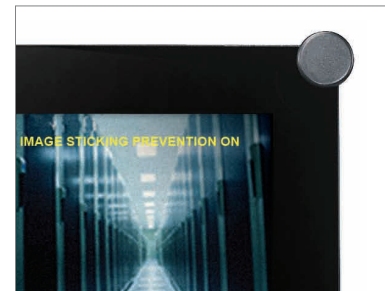


SX-17

Specifications		SX-17
Panel	Panel Type	TFT LCD
	Panel Size	17.0" (432 mm)
	Max. Resolution	SXGA 1280 x 1024
	Pixel Pitch	0.264 mm
	Brightness	300 cd/m ² (Typical)
	Contrast Ratio	800:1 (Typical)
	Viewing Angle (H/V)	160°/160° (Typical)
	Display Colour	16.2M
	Response Time	3 ms (GTG)
	Panel Life Time	50,000 hrs (Minimum)
Frequency (H/V)		H: 30 kHz - 80 kHz V: 56 Hz - 75 Hz
Max. Pixel Clock		140 MHz
Input	Analogue	15-Pin D-Sub
	Digital	24-Pin DVI-D
	BNC Security	BNC Connector
Input Signal	Analogue	RGB H.V Sync
	Digital	TMDS
	Composite	NTSC/PAL/SECAM
Output Connector	BNC Security	BNC Connector
Power	AC-DC Adaptor	External
	Power Consumption	AC 100 - 240 V, 50 - 60 Hz < 42 W (On) < 2 W (Off)
NeoV™ Optical Glass	Thickness	3.0 mm (0.12")
	Reflection Rate	< 1%
	Transmission Rate	> 96%
	Coating Hardness	> 9H
Plug & Play	VESA	DCC 2B , DCC/GI
Operating Conditions	Temperature	0 °C ~ 40 °C
	Humidity	10% ~ 90%
Storage Conditions	Temperature	-20 °C ~ 60 °C
	Humidity	5% ~ 95%
Mounting	VESA FPMPMI	Yes (100 mm)
Tilt	Tilt	0° ~ +15°
Dimensions	Product (W x H x D)	408 x 398 x 175 mm (16.1" x 15.7" x 6.9")
	Packaging (W x H x D)	493 x 513 x 226 mm (19.4" x 20.2" x 8.9")
Weight	Product Weight	6.8 kg (14.9 lbs)
	Packaged Product Weight	9.5 kg (20.9 lbs)
Regulation Approval	Certifications & Compliance	UL/CUL, TUV/Baurt, CB, GOST-R, FCC, CE, BSMI, WEEE, RoHS, Vista/Basic, REACH
Accessories	Supplied	Quick Guide, CD ROM (user manual and drivers), power cord, power adaptor, 15-Pin D-Sub cable, 24-Pin DVI-D cable, CVBS BNC connector cable



NeoV™ Optical Glass for hard glass protection and strong metal casing for secure mounting



Anti-Burn-in™ technology prevents image sticking



Specifically designed and tested for commercial video security applications



Looping BNC video connector for multiple display connections