

WCA-363

Super High Resolution Rugged IR PTZ Camera

- ❖ 36X zoom camera
- ❖ 700TV Lines
- ❖ Support WDR
- ❖ Vehicle application
- ❖ e-mark



FEATURES

- 1/4" 613K pixels SONY Super HAD Dual san CCD
- 700TV Lines of most high resolution with 612,688 pixel CCD
- Optical 36X Power zoom and 32X Digital zoom
- Dual Scan 512X WDR
- Intelligent detection for baggage removed and loaded
- IR/ White LED selectable
- 5Ø IR LED 46pcs
- 5Ø White LED 46pcs
- Light distance : 120m (manual focusing)
- IP66 Outdoor Application
- Endless Pan rotation (-22.5 ° to 90 ° Tilt angle)
- Up to 63 programmable preset, 8 programmable Tour, 4 Pattern
- Alarm - Move the camera to programmed Preset position with Alarm trigger (Max 2).
- 4 Scan(Programmable speed and diagonal scan)
- Programmable Privacy Masking(2 Zones)
- RS-485 communication and remote program update
- Multiple protocol (Pelco-D, Pelco-P, Wonwoo)
- Mechanical Auto Flip
- Programmable Zoom Speed(Optional Update tool)
- With Extra IR DC 12V, 3A

OPTIONAL(LCS-363)

This stable and reliable design makes ideal for car application such as traffic monitoring, car surveillance, because it has IP66 grade, Aluminum die-casting body. * Additional IR Models are not recommended for car application.



700TV Lines High Resolution Image

These cameras combine a Sony "Effio" DSP with a 1/4-type Super HAD II CCD®. They achieve a high horizontal resolution of 700~750 TV lines with 611, 688 pixels CCD, enabling reproduction of amazingly clear and detailed images.



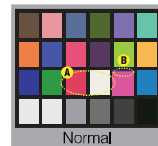
Normal



650TV Line

Color Reproduction

Color reproduction of other camera looks flashy. The "A" portion should be actually yellow and red, however, it washes out due to the white saturation. In addition, the amount of aperture signal is large, making the edges worse (see the "B" portion). Even if the aperture level drops, the images become blurry.



Normal



Color Reproduction

Light Function

It's builtin 45 pcs LED and additional 14pcs Super LED(Infra-red or white), So it provides visible distance up to 120m in dark.(manual focusing)

Wide Dynamic Range Image

These cameras incorporate an advanced backlight compensation technology that dramatically improves each camera's dynamic range by 512 times when compared to conventional cameras. Thanks to this new technology, users can capture clear images even in extreme high-contrast lighting environments. The cameras capture the same image twice: first with a normal shutter speed, and then with a high shutter speed.

The dark areas captured at normal shutter speed and the bright areas captured at high shutter speed are then combined into one image using an advanced DSP Effio, this clearly reproducing the original scene.



Auto ICR

These cameras offers optimal sensitivity in both day and night shooting applications. At a set level of darkness, the IR-cut filter is automatically disabled (ICR ON) and the near-infrared sensitivity is increased. At a set level of brightness, the filter is automatically enabled (ICR OFF). The IR-cut filter automatically engages depending on the ambient light, allowing the camera 24/7 operation in a variety of lighting conditions.

32x E-Zoom

Provide more recognizable picture after E-zoom due to 960 effective vertical pixels.

WCA-363

WONWOO
www.goodome.com

Super high Resolution Rugged IR PTZ Camera

SPECIFICATIONS

MECHANICAL	
Pan	360° Endless Pan 0.1° to 100°/sec.
Pan Preset Speed	110°/sec, ± 0.1° Accuracy
Tilt	-22.5° to 90° tilt angle (64steps proportional to zoom)
Tilt Preset Speed	60°/sec, ± 0.05° Accuracy
Weight	2.7kg
Dimensions	138(Ø) x 205.81(H) mm

ENVIRONMENTAL	
Construction	Aluminum
Ingress Protection	IP66 (Outdoor Housing)
Color	Black or Cool Gray
Operating Temp	-20°C to 50°C (Fan&Heater power ON)
Humidity	0% to 90%

FUNCTIONS	
Preset	63 points less than 0.1° accuracy
Tour	8 programmable
Pattern	4 patterns
Flip	Mechanical / Auto / Off (Rotate 90° at bottom of tilt)
Auto Scan	4 (programmable speed and diagonal scan)
Privacy Zone	2 blocks with title (Masking / Video off)
Address	Up to 255 selectable ID (Rotary switch)
Data Communication	RS-485
Protocol	Multiple protocol
Baud rate	2400, 4800, 9600, 19200, 38400, 57600, 115200 bps
Alarm In	2 alarm (NO/NC, Priority)
Alarm Out	2 relay out (Hold, Latch)
Display	Zone title on/off (start / end zone)

LIGHT BAR SPECIFICATION	
Rated Voltage	DC 12V
Rotation Number of Reflector	80 ~ 120 / Mins

ELECTRICAL	
Power	DC 12V, 22W, 1.5A(with extra IR 3A) (Power adaptor not included)
Consumption	18.0 W (1.0A Max.)
Fan & Heater	42W
Light	50 IR LED or White LED 46pcs
Light distance	80m (manual focusing)

CERTIFICATION	
CE, FCC CLASS A, RoHS, e-mark	

CAMERA SELECTION

MODEL	WCA-363N / WCA-363P
Image Sensor	1/4" SONY Super HAD II CCD (Double Scan)
Effective Pixels	NTSC: 1028(H)X508(V) , PAL: 1028(H)X596(V)
Lens	Optical 36x, Digital 32x f=3.4 to 122.4mm(F1.6 to 4.5)
Digital Zoom	ON/OFF(Max. 32x)
Angle Field of View	H : 57.8° (wide) to 1.7° (tele)
Scanning System	Interface
Synchronization	Internal
Frequency	NTSC: 15.734 Khz(H), 59.94 Hz(V) PAL: 15.625 Khz(H), 50.00 Hz(V)
Resolution	700 TV Lines
Min. Illumination	Color DSS: 0.001 lux, BW DSS: 0.0004 lux
S/N (Y signal)	50 dB
Video Output	CVBS : 1.0Vp-p/75Ω
Focus	Auto / Manual / Zoom - Trig
IRIS Control	Auto / Manual
Camera Title	ON/OFF
Day & Night	Auto / Sens-in / Ext / Day / Night
Gain Control	Off / On (Auto max 32dB)
White Balance	ATW / One-Push / Indoor / Outdoor / Manual / Auto
WDR / BLC	Off / WDR / BLC
Shutter Speed	NTSC: 1/60~1/100,000sec / PAL: 1/50~1/100,000sec
Control Output	2400, 4800, 9600, 19200, 38400 bps
Communication	Pelco-D / Pelco-P / VISCA
Image DNR	Off / Manual / Auto
Privacy Mask	Off / 16 positions
Display	Disp Sel / Init Sel / Set Title / Set Init Masg / Language

DIMENSIONS

Unit : mm

