

Key Features

- Heavy duty extruded aluminium design with four entry plugs
- Class I, Div 1 & 2, Groups A, B, C, D
- Class II, Div 1 & 2, Groups E, F, G
- Class III
- CSA – NRTL Approved to OSHA standards
- MFP Technology (Mechanical Filter with Photocell) CCD models for outstanding color and IR sensitivity
- LXR CCD models for excellent IR sensitivity, low smear, low streak and excellent anti-blooming characteristics
- Easy access slide tray allows for fast installation and easy camera adjustments
- 3/8" chemical resistant window
- Optional Lexan ballistic window
- Optional heater / blower
- Various compatible mounting hardware
- Full size 20" housing accommodates various zoom lenses
- May be combined with Extreme's Explosion Protected Infrared Illumination for 24/7 day and night effectiveness

Product Description

The EX63 is a full-size 20" explosion protected camera for effective surveillance at high risk environments. Designed for hazardous industrial locations including the entire range of OSHA (UL) designations for explosive locations. Its stringent Class I, Division I certifications allow safe functioning at locations where ignitable concentrations of flammable gases or liquid vapors are present during normal operation. Groups covered include acetylene, hydrogen, ethylene and methane, all highly explosive gases. The EX63 is also certified for operation in areas where ignitable concentrations of combustible dusts (such as carbon-based or agricultural dusts) are present during normal operation

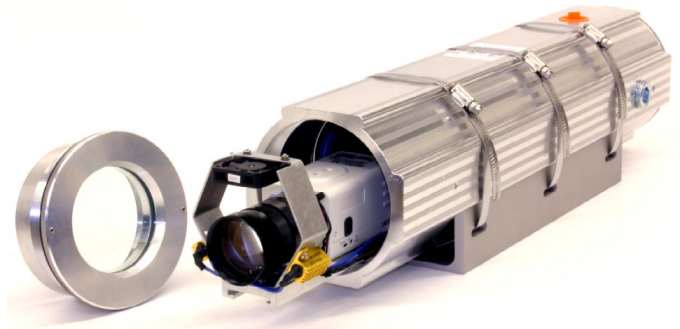
The EX63's 20" design is large enough to accommodate various zoom lenses, as well as integrate with mounting heavy-duty hardware and Extreme's explosion protected Pan-Tilt motors.

Applications

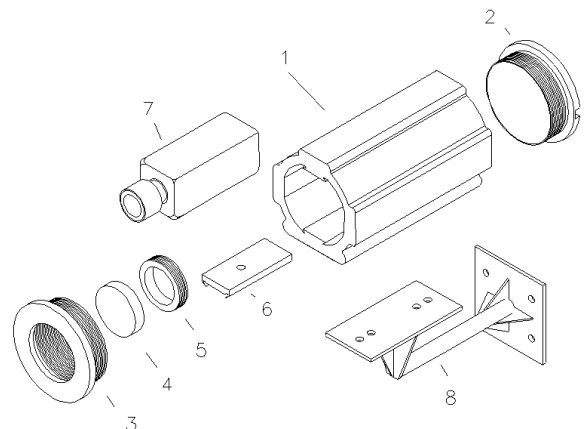
- Chemical factories
- Petroleum refineries, oil and gas processing
- Utility gas plants
- Grain elevators, flour mills
- Dry cleaning plants
- Pharmaceutical plants
- Coal and carbon processing
- Aircraft hangars
- Spray finishing areas
- Munitions and fuel storage facilities

Note: The use of explosion protected housings may be subject to local or regional regulatory approval. The authorities having jurisdiction for each installation and application may vary and their respective requirements may differ. The integration of your equipment with the EX63 may also be subject to local authority approval.

Product Images

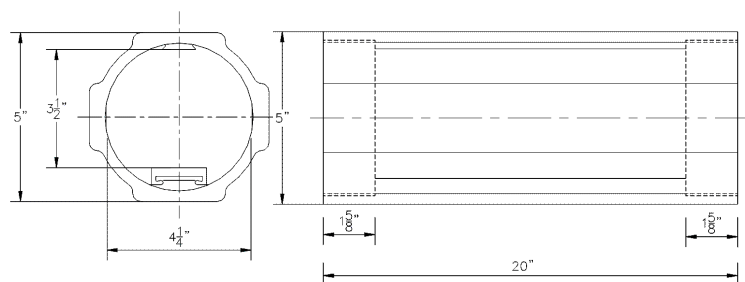


A slide track allows for easy installation of CCD cameras. Heater, blower and ballistic insert are provided as optional.



Legend:

1. EX63 housing copper-free aluminum.
2. End cover with locking pin.
3. View cover with locking pin.
4. 3/8" view window (3/4" ballistic Lexan insert optional)
5. Retaining ring
6. Camera guide tray with locking pin.
7. Standard CCD camera. (optional)
8. Standard mounting hardware (optional)



Patent Pending. Specifications are subject to change without notice

© Extreme CCTV Inc 2007. Extreme CCTV International Inc is a subsidiary of Extreme CCTV Inc

EX63_TS_070101

Dealer / Distributor



Corporate Headquarters
Extreme CCTV Inc
TF: 1 888 409 2288
T: +1 604 420 7711
F: +1 604 420 3300
E: Sales@ExtremeCCTV.com
www.ExtremeCCTV.com



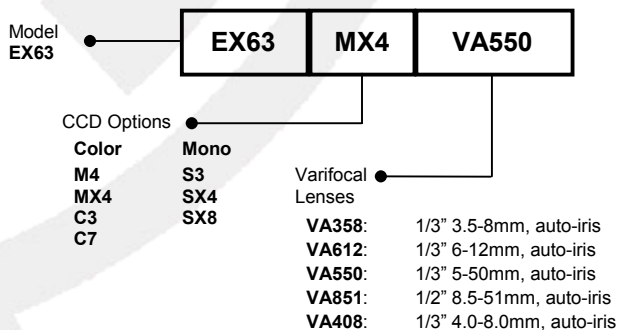
European Operations
Derwent Systems Ltd
A Division of Extreme CCTV (UK) Ltd
T: +44 (0) 1670 730 187
F: +44 (0) 1670 730 188
E: SalesUK@DerwentCCTV.com
www.DerwentCCTV.com

Certifications / Compliance

	EX63 Explosion Protected Surveillance Enclosure
CSA-NRTL	LR 113310
Class	9098 01 / 81 - Miscellaneous - for Hazardous Locations
Safety	OSHA / ANSI / UL / CSA
	UL 508, Sixteenth Edition - Industrial Control Equipment
	UL 698, Eleventh Edition - Industrial Control Equipment for Use in Hazardous (Classified) Locations
	UL 1203 Explosion-Proof and Dust-Ignition-Proof Electrical Equipment for Use in Hazardous (Classified) Locations
	CSA C22.2 No.0-M1991 General Electrical Requirements
	CSA C22.2 No.0.4-M1982 Bonding and Grounding of Electrical Equipment (Protective Grounding)
	CSA C22.2 No.25-M1966 Enclosures for Use in Class II Groups E, F, and G Hazardous Locations
	CSA C22.2 No.30-M1986 Explosion-proof Enclosures for Use in Class I Hazardous Locations
	CSA C22.2 No.94-M1991 Special Purpose Enclosures
	CSA C22.2 No.142-M1987 Process Control Equipment
	Class I, Div 1, 2, Groups A, B, C, D
	Class II, Div 1, 2, Groups E, F, G
Class III	
Operational	Temperature Code T6 at maximum ambient temperature 55°C (131°F)
Environmental	CSA / NEMA TYPE 4

General CCD Specification (See specification tables for detailed camera specifications)

CCD	Description
MX4	Mechanical filter, photocell, enhanced infrared sensitivity, 1/3" LXR sensor, 550 TVL color, 570 TVL monochrome
M4	Mechanical filter, photocell, 1/3" SuperHAD sensor, 550 TVL color, 570 TVL monochrome
C7	1/3" SuperHAD sensor, 480 TVL color
C3	1/3" SuperHAD sensor, 380 TVL color
S3	1/3" SuperHAD sensor, 600 TVL monochrome
SX4	High performance infrared, 1/3" LXR sensor, 420 TVL monochrome
SX8	High performance infrared, 1/2" LXR sensor, 600 TVL monochrome

Part Numbers (Special Order Models available on request)

Optional Accessories

EXPS.001	Power supply, 110 AC input to 12 VDC
EXMB.003	Heavy duty wall bracket
EXMB.004	Heavy duty ceiling bracket
EXMB.005	Heavy duty wall bracket
EXHB.612	Heater / Blower / Thermostat 12 VDC
EXHB.624	Heater / Blower / Thermostat 24 VAC
EXSH.63	Aluminum sunhood with 2 knockouts
HSG60WIN-B75	Lexan ballistic insert 0.75"
HSG60WIN-B125	Lexan ballistic insert 1.25"

Note: If using ballistic inserts, lens focal length should be 6mm or longer.

Specifications: Photocell-Controlled Mechanical Filter Cameras, Day / Night Switching

	Day-Night Switching, Color / Monochrome	Day/Night, Color/Mono w/ Enhanced IR Performance
CCD	M4 with MFP Technology	MX4 with MFP Technology
Image Sensor	1/3" Interline SuperHAD CCD	1/3" LXR CCD
Resolution	550 TVL color / 570 TVL monochrome	550 TVL color / 570 TVL monochrome
Effective Pixels	NTSC: 768 (H) x 494 (V) • PAL: 752 (H) x 582 (V)	NTSC: 768 (H) x 494 (V) • PAL: 752 (H) x 582 (V)
Sensitivity	0.06 Lux with F1.4 lens 0 Lux under IR illumination	0.02 Lux with F1.4 lens 0 Lux under IR illumination
S/N Ratio	Greater than 48dB (AGC off)	Greater than 48dB (AGC off)
Output Signal	1Vp-p, 75Ω	
Gamma	0.45	
Gain Control	AGC	
Electronics Iris	1/60 ~ 1/100,000 (NTSC) • 1/50 ~ 1/100,000 (PAL)	
Filter	Dual-window mechanical type	
Consumption	5 W maximum	
Voltage	12 to 24 AC/DC	
Construction	Robust aluminum extrusion with four entry plugs	
Bracketry	U-Bracket with stainless steel straps included	
View Window	Copper-free tempered view window	
Weight	15.9 lbs (7.2 kg) without camera	
Operational Range	With sunhood: -50°C to +55°C (-58°F to +131°F) without sunhood -50°C to +50°C (-58°F to +122°F)	
Overall Dimension	Approximately 5" (127mm) diameter x 20" (508mm) length	

Specifications: Color Cameras

	C3 Standard	C7 High Resolution Color
CCD	C3 Standard	C7 High Resolution Color
Image Sensor	1/3" Interline SuperHAD	1/3" Interline SuperHAD
Resolution	380 TVL	480 TVL
Effective Pixels NTSC	NTSC: 510 (H) x 492 (V)	NTSC: 768 (H) x 494 (V)
Effective Pixels PAL	PAL: 500 (H) x 582 (V)	PAL: 752 (H) x 582 (V)
Sensitivity	0.5 Lux @ F1.4	2.7 Lux @ F1.4
S/N Ratio	Greater than 48dB	Greater than 48dB
Output Signal	1Vp-p, 75Ω	
Gamma	0.45	
Gain Control	AGC	
Electronics Iris	1/60 ~ 1/100,000 (NTSC) • 1/50 ~ 1/100,000 (PAL)	
Consumption	5 W maximum	
Voltage	12 to 24 AC/DC	
Construction	Robust aluminum extrusion with four entry plugs	
Bracketry	U-Bracket with stainless steel straps included	
View Window	Copper-free tempered view window	
Weight	15.9 lbs (7.2 kg) without camera	
Operational Range	With sunhood: -50°C to +55°C (-58°F to +131°F) without sunhood -50°C to +50°C (-58°F to +122°F)	
Overall Dimension	Approximately 5" (127mm) diameter x 20" (508mm) length	

Patent Pending. Specifications are subject to change without notice

© Extreme CCTV Inc 2007. Extreme CCTV International Inc is a subsidiary of Extreme CCTV Inc

EX63_TS_070101

Dealer / Distributor


 Corporate Headquarters
Extreme CCTV Inc
 TF: 1 888 409 2288
 T: +1 604 420 7711
 F: +1 604 420 3300
 E: Sales@ExtremeCCTV.com
 www.ExtremeCCTV.com

 European Operations
Derwent Systems Ltd
 A Division of Extreme CCTV (UK) Ltd
 T: +44 (0) 1670 730 187
 F: +44 (0) 1670 730 188
 E: SalesUK@DerwentCCTV.com
 www.DerwentCCTV.com

Specifications: Monochrome Cameras

CCD	S3 High Resolution Monochrome
Image Sensor	1/3" Interline SuperHAD
Resolution	600 TVL
Effective Pixels	NTSC: 768 (H) x 494 (V) • PAL: 752 (H) x 582 (V)
Sensitivity	0.05 Lux @ F1.4
S/N Ratio	Greater than 50dB
Output Signal	1Vp-p, 75Ω
Gamma	0.45
Gain Control	AGC
Electronics Iris	1/60 ~ 1/100,000 (NTSC) • 1/50 ~ 1/100,000 (PAL)
Consumption	5 W maximum
Voltage	12 to 24 AC/DC
Construction	Robust aluminum extrusion with four entry plugs
Bracketry	U-Bracket with stainless steel straps included
View Window	Copper-free tempered view window
Weight	15.9 lbs (7.2 kg) without camera
Operational Range	With sunhood: -50°C to +55°C (-58°F to +131°F) without sunhood -50°C to +50°C (-58°F to +122°F)
Overall Dimension	Approximately 5" (127mm) diameter x 20" (508mm) length

Specifications: High Performance Infrared Cameras

CCD	SX4 High Performance Infrared	SX8 High Performance Infrared
Image Sensor	1/3" LXR CCD for high performance infrared	1/2" LXR CCD for high performance infrared
Resolution	420 TVL	600 TVL
Effective Pixels EIA	EIA: 542 (H) x 492 (V)	EIA: 811 (H) x 508 (V)
Effective Pixels CCIR	CCIR: 542 (H) x 582 (V)	CCIR: 795 (H) x 596 (V)
Sensitivity	0.01 Lux @ F1.2 (SAGC on) 0 Lux under IR illumination	0.01 Lux @ F1.2 (SAGC on) 0 Lux under IR illumination
S/N Ratio	Greater than 48dB	Greater than 48dB
Output Signal	1Vp-p, 75Ω	
Gamma	0.45	
Gain Control	AGC	
Electronics Iris	1/60 ~ 1/100,000 (EIA) • 1/50 ~ 1/100,000 (CCIR)	
Consumption	5 W maximum	
Voltage	12 to 24 AC/DC	
Construction	Robust aluminum extrusion with four entry plugs	
Bracketry	U-Bracket with stainless steel straps included	
View Window	Copper-free tempered view window	
Weight	15.9 lbs (7.2 kg) without camera	
Operational Range	With sunhood: -50°C to +55°C (-58°F to +131°F) without sunhood -50°C to +50°C (-58°F to +122°F)	
Overall Dimension	Approximately 5" (127mm) diameter x 20" (508mm) length	

Dealer / Distributor


 Corporate Headquarters
Extreme CCTV Inc
 TF: 1 888 409 2288
 T: +1 604 420 7711
 F: +1 604 420 3300
 E: Sales@ExtremeCCTV.com
 www.ExtremeCCTV.com

 European Operations
Derwent Systems Ltd
 A Division of Extreme CCTV (UK) Ltd
 T: +44 (0) 1670 730 187
 F: +44 (0) 1670 730 188
 E: SalesUK@DerwentCCTV.com
 www.DerwentCCTV.com