

Key Features

- Heavy Duty Extruded Aluminium Design
- Class I, Div 1 & 2, Group A, B, C, D
- Class II, Div 1 & 2, Group E, F, G
- Class III
- Equipped in CSA NRTL approved housing
- Easy access slide tray for camera guide
- 3/8" chemical resistant window
- 100 LEDs for 60 ft. (18.3 m) performance
- 3/4 NPT Conduit Hole Input
- Input: 15W (max), 12 VDC or 24 VAC

Product Description

An LED infrared illuminator operating at safe low temperatures provides illumination for I.R. sensitive cameras without the high cost of conventional lighting in hazardous environments.

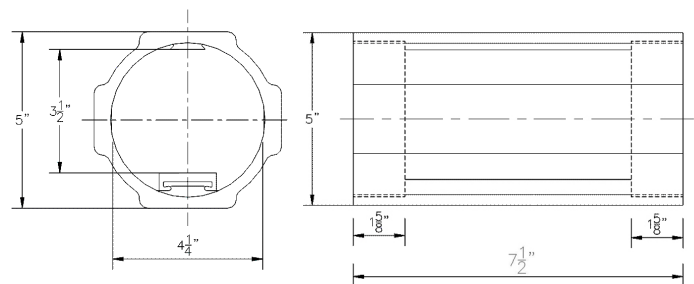
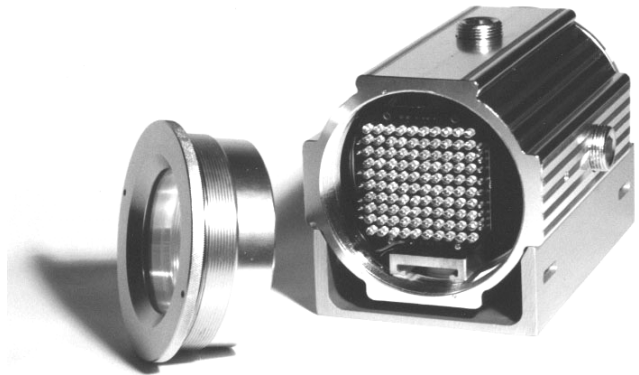
Its Class I, Groups A and B ratings for Acetylene and Hydrogen makes this housing unique in industry. (See test results or consult with Extreme CCTV engineers for any known limitations).

The EX60 is also designed to CCTV industry standards for mounting hardware and motorized pan/tilt devices.

Applications

- Chemical factories
- Petroleum refineries, oil and gas processing
- Utility gas plants
- Grain elevators, flour mills
- Dry cleaning plants
- Pharmaceutical plants
- Coal and carbon processing
- Aircraft hangars
- Spray finishing areas
- Munitions and fuel storage facilities

Product Image



Optional Accessories

- | | |
|--------------------------|------------------------------|
| EXPS.008 | PSU, 110 AC input to 12 VDC |
| EXMB.003 | Heavy duty wall bracket |
| EXMB.004 | Heavy duty ceiling bracket |
| EXMB.005 | Heavy duty wall bracket |
| HSG60WIN-B75 | Lexan ballistic insert 0.75" |
| HSG60WIN-B125 | Lexan ballistic insert 1.25" |

Certifications / Compliance

	EX62 Explosion Protected Surveillance Enclosure
CSA-NRTL	LR 113310
Class	9098 01 / 81 - Miscellaneous - for Hazardous Locations
Safety	OSHA / ANSI / UL / CSA
	UL 508, Sixteenth Edition - Industrial Control Equipment
	UL 698, Eleventh Edition - Industrial Control Equipment for Use in Hazardous (Classified) Locations
	UL 1203 Explosion-Proof and Dust-Ignition-Proof Electrical Equipment for Use in Hazardous (Classified) Locations
	CSA C22.2 No.0-M1991 General Electrical Requirements
	CSA C22.2 No.0.4-M1982 Bonding and Grounding of Electrical Equipment (Protective Grounding)
	CSA C22.2 No.25-M1966 Enclosures for Use in Class II Groups E, F, and G Hazardous Locations
	CSA C22.2 No.30-M1986 Explosion-proof Enclosures for Use in Class I Hazardous Locations
	CSA C22.2 No.94-M1991 Special Purpose Enclosures
	CSA C22.2 No.142-M1987 Process Control Equipment
	Class I, Div 1, 2, Groups A, B, C, D
	Class II, Div 1, 2, Groups E, F, G
Operational	Temperature Code T6 at maximum ambient temperature 55°C (131°F)
Environmental	CSA / NEMA TYPE 4

Specification (Other Special Order Models available on request)

Model	EX60LED.850W	EX60LED.850M	EX60LED.940W	EX60LED.940M
LED Type	850nm	850nm	940nm	940nm
LED Beam Angles	60° wide	30° medium	60° wide	30° medium
Number of LEDs	100			
Power Supply	12 VDC or 24 VAC			
Construction	Aluminium, Extruded, Copper-Free, 3/8" Tempered View Window			
Bracketry	U-bracket & stainless steel straps included			
Dimensions	128 mm x 191 mm 5.0" x 7.0"			
Weight	10 lbs 4.5 kg			
Operating Temperature	-50°C to +60°C -58°F to +140°F			
Temperature Code	T6 @ 55°C			

Dealer / Distributor


 Corporate Headquarters
Extreme CCTV Inc
 TF: 1 888 409 2288
 T: +1 604 420 7711
 F: +1 604 420 3300
 E: Sales@ExtremeCCTV.com
 www.ExtremeCCTV.com

 European Operations
Derwent Systems Ltd
 A Division of Extreme CCTV (UK) Ltd
 T: +44 (0) 1670 730 187
 F: +44 (0) 1670 730 188
 E: SalesUK@DerwentCCTV.com
 www.DerwentCCTV.com